

DATAMEER ON FULL METAL

Datameer on Full Metal is the fastest way for department managers to start integrating, preparing, analyzing and visualizing data right away. With Datameer on Full Metal you get an entire big data analytics stack deployed, configured, and ready to crunch data, in less than 20 minutes.

ANALYTICS ON HADOOP IN 20 MINUTES

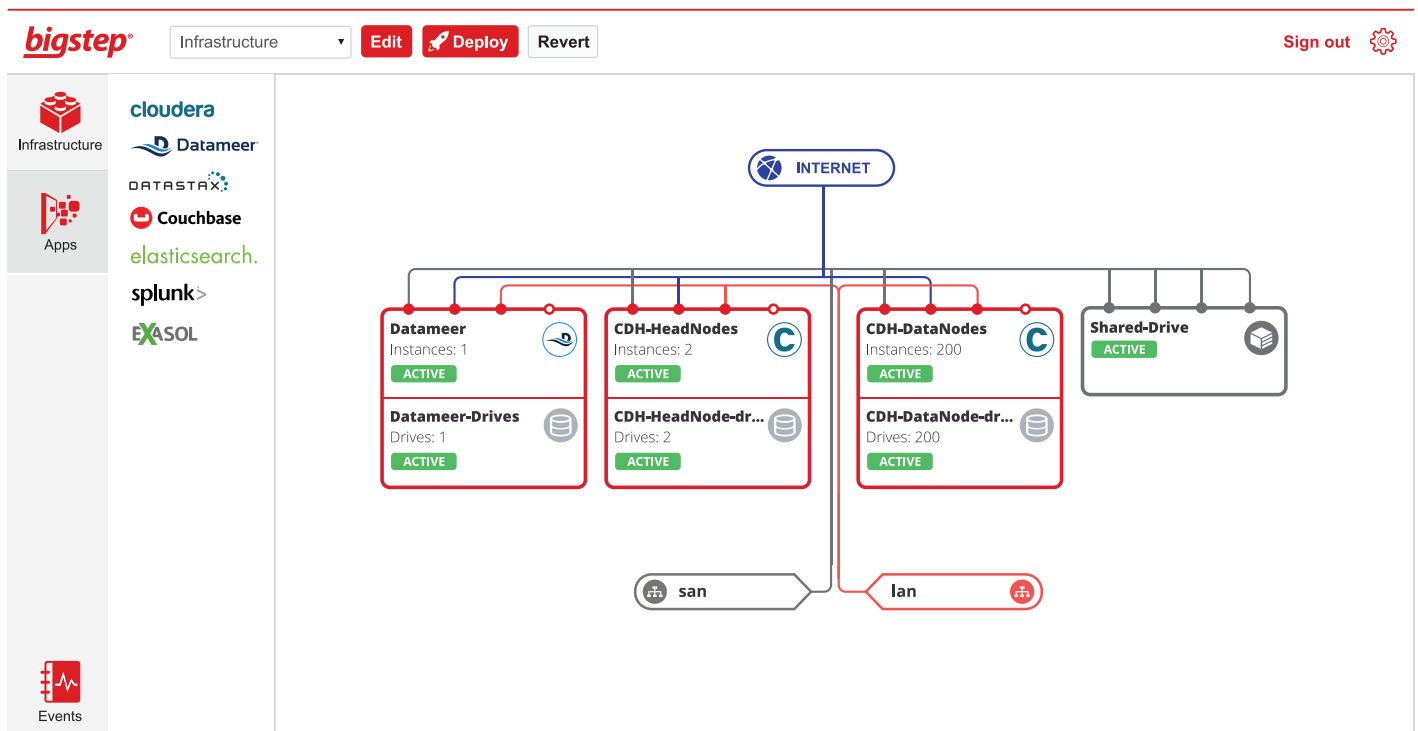
- **The Full Metal Cloud** is the world's highest performance cloud, purpose built for big data. Hadoop, NoSQL DBs, search and analytics engines reach up to **500% better performance** running on Full Metal compared to virtualized public clouds.
- **Datameer Professional** is the first big data analytics platform in the cloud targeted for departmental deployments. Datameer Professional is the most affordable and agile option for business analysts, managers and executives who want to start integrating, preparing, analyzing and visualizing terabytes of structured and unstructured data immediately.
- **Hadoop: Cloudera CDH** offers a dedicated single-tenant, scalable, and high-performance Hadoop environment that can be deployed and scaled at the click of a button. CDH is the only Hadoop distribution to offer unified batch processing, interactive SQL, interactive search, and fine-grained role-based security. More enterprises have downloaded CDH than all other Hadoop distributions combined.

bigstep[®]

Datameer[®]

cloudera CDH

Datameer, Hadoop (CDH), and the Full Metal Cloud are all deployed and integrated at the click of a button – empowering you to start getting insights from your data in minutes. Deployment requires no IT, DevOps, or programming resources.



WHY YOU'LL LOVE DATAMEER ON FULL METAL

The Full Metal Cloud provides a high-performance Hadoop environment which makes Datameer queries run faster than ever. Working with terabytes of data is just as easy as building a spreadsheet on your laptop.

EASY TO USE AND AFFORDABLE



Very easy to get started and work with

Power up the turnkey environment in 20 minutes with little or no technical background. No waiting for servers to be delivered or provisioned, or on-premise software to be configured.



Affordable

Orders of magnitude lower TCO compared to traditional enterprise data warehouse and BI solutions, with a much smaller upfront investment.



Data security & sovereignty

The Full Metal Cloud is ISO 27001:2013 certified and also compliant to the new GDPR and the NIS Directive.



Better support

Datameer on Full Metal includes 24/7 support for the infrastructure. For Datameer Professional and Cloudera CDH, 8/5 and 24/7 support options are available.



Flexible billing

Pay for infrastructure per hour, per month or per year, we accommodate most procurement methodologies and you'll save time on purchasing. Datameer Professional is billed as an annual subscription.

HIGH-PERFORMANCE, SECURE & SCALABLE



Full Metal performance

The Full Metal Cloud provides up to 500% better performance for high throughput, low latency environments compared to other virtualized public clouds.



Unassisted deployment and scaling

Datameer, Cloudera Manager, HDFS and YARN are automatically installed and configured to work together and scale with the infrastructure.



Full cloud flexibility

Add or remove storage and compute power at any time. Instance count or configuration can be edited with a few clicks.



Connect to on-premise networks

We provide seamless integration with on-premise data centers via secure channels. Layer 2 broadcast domains can be configured to extend the subnets used in on-premise data centers into the cloud, avoiding NAT or complex routing setups.



Isolation & control

The environment is fully isolated at the compute and networking levels, and you have root access to all machines. There is no hypervisor or other middle layer to allow outside access.

SECURITY ON FULL METAL



DATA SECURITY

The Full Metal Cloud provides isolated environments for hosting critical data, with the following characteristics:

- **Bare metal, isolated, single-tenant servers**

You don't share hardware with anyone; security risks associated with multi-tenant virtualized environments are completely eliminated.

- **Root access & data security**

After the initial provisioning, root access credentials can be changed, preventing anyone, including Bigstep technical staff, from accessing your systems.

Data on the disk can be encrypted. Existing security procedures such as Active Directory integration or periodic patches can be applied to the instances.

- **Isolated layer 2 broadcast domains**

Each client network is completely isolated at the physical level. Switch ports are physically dedicated to individual client accounts.

Traffic cannot be intercepted or injected in any way into client controlled networks.

- **Dedicated physical network**

You are in complete control of the network, at the physical level. There is no virtual switching involved and no multi-tenancy.

- **LAN networks**

They are physically isolated, so users can configure their own private IPs and drive all their VLANs.

There cannot be any private IP or VLAN conflict with another user in the Full Metal Network.

- **The Storage Network**

This is a key security area. SAN traffic is isolated in multiple ways:

- Traffic to Compute Instances is routed only inside the subnet allocated to each instance, preventing access to/from any other device in the Full Metal Network. Corresponding switch ports are used as layer 3 gateways for the SAN traffic, to prevent traffic sniffing.
- Layer 3 ACLs are in place to filter traffic and allow only specific storage communication to flow from/to specific instances in the network.
- PXE DHCP messages used to authenticate an instance are based on a tag the switch adds to all DHCP traffic coming from a port. This ensures that there is no way for a user to impersonate another.

- **WAN traffic isolation**

WAN traffic sent via public IPs between compute instances is transferred inside a layer 2 broadcast domain. Each user has a subnet and layer 3 gateway interface in the layer 2 broadcast domain, so a user's WAN traffic can never be intercepted by others.

- **RADIUS authentication**

Operations our orchestration layer performs on switches are regulated by RADIUS authentication.

- **Comms and data encryption**

API and orchestration layer communications are encrypted, signed with timestamps, and secured against replay attacks, identity theft (impersonation) or request forgery.

All critical data is encrypted. Passwords are not stored in the database.

DATAMEER PROFESSIONAL

Big Data Analytics Platform for Hadoop-as-a-Service

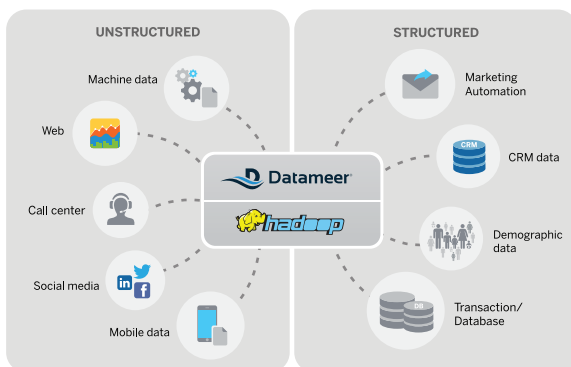
Datameer Professional is the first SaaS big data analytics platform designed for departmental deployments. This cost-effective offering leverages Hadoop-as-a-Service (“HaaS”) technology, so business executives and managers can get up and running with big data in hours, without the need for enterprise wide Hadoop deployments.

In Europe, Datameer Professional leverages the enterprise grade Hadoop-as-a-Service offering provided by Bigstep. The Full Metal Cloud is the world’s highest performance cloud, purpose-built for big data. Datameer is seamlessly integrated into this secure cloud environment for turnkey deployments of up to 25 users running on up to 5 compute nodes. With Datameer Professional you can easily ingest, analyze and visualize terabytes of structured and unstructured data from all your data sources, combining them in powerful new ways to deliver insights that transform your business.

SIMPLE, POWERFUL, VISUAL

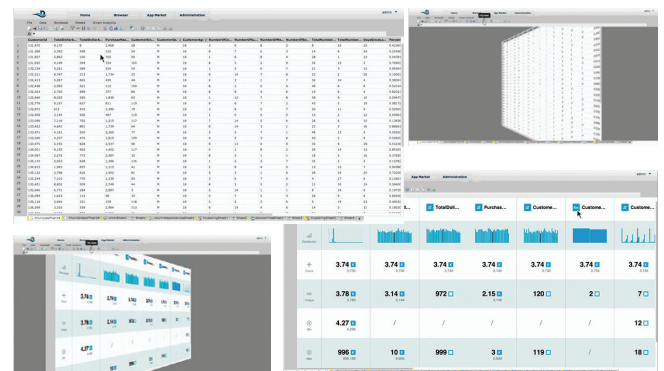
- **Data Integration:**

Point and click data integration with over 60+ Connectors



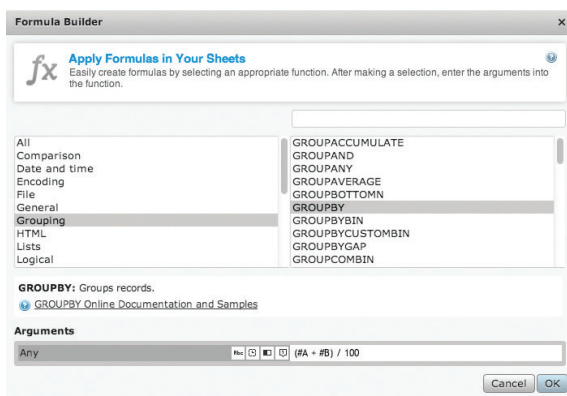
- **Data Preparation:**

Excel-like user interface and a visual profile of all your data for early anomaly detection



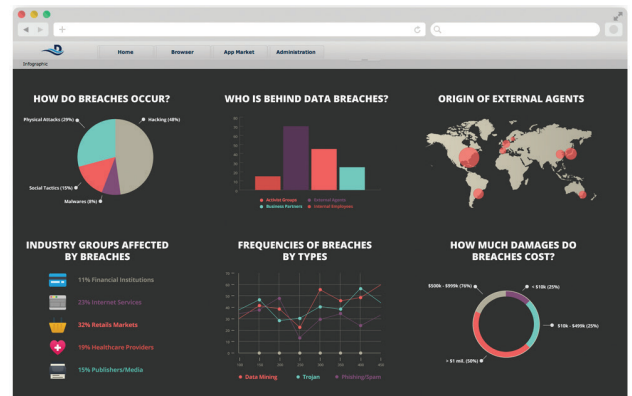
- **Analytics:**

Over 270 pre-built analytic functions from simple joins to complex data mining algorithms



- **Visualization:**

Drag-and-drop design, custom annotations and social sharing lets you communicate insights visually



For more details about Datameer on Full Metal, visit bigstep.com/datameer